



RIGEL
GLOBAL

Built with Purpose.
Delivered with Care.



PHYTO MAX-P

Advanced 3-Phytase Enzyme Formulation

Optimizing Phosphorus Utilization for Superior Poultry Performance

— Key Performance Benefits —

- ✓ Enhanced Feed Conversion Efficiency
- ✓ Improved Phosphorus Bioavailability
- ✓ Reduced Inorganic Phosphorus Supplementation
- ✓ Lower Environmental Phosphorus Load





Overview

Phyto Max-P is a highly efficient phytase enzyme supplement developed to enhance phosphorus bioavailability in poultry feed. It effectively degrades phytate-bound phosphorus present in plant-derived feed ingredients, leading to improved nutrient digestibility and absorption. This results in better growth performance, enhanced feed efficiency, and a significant reduction in phosphorus excretion, supporting environmentally sustainable poultry production. Phyto Max-P is a 3-phytase enzyme sourced from *Aspergillus niger* and *E. coli*, delivering reliable and consistent enzymatic activity under practical feed processing conditions.



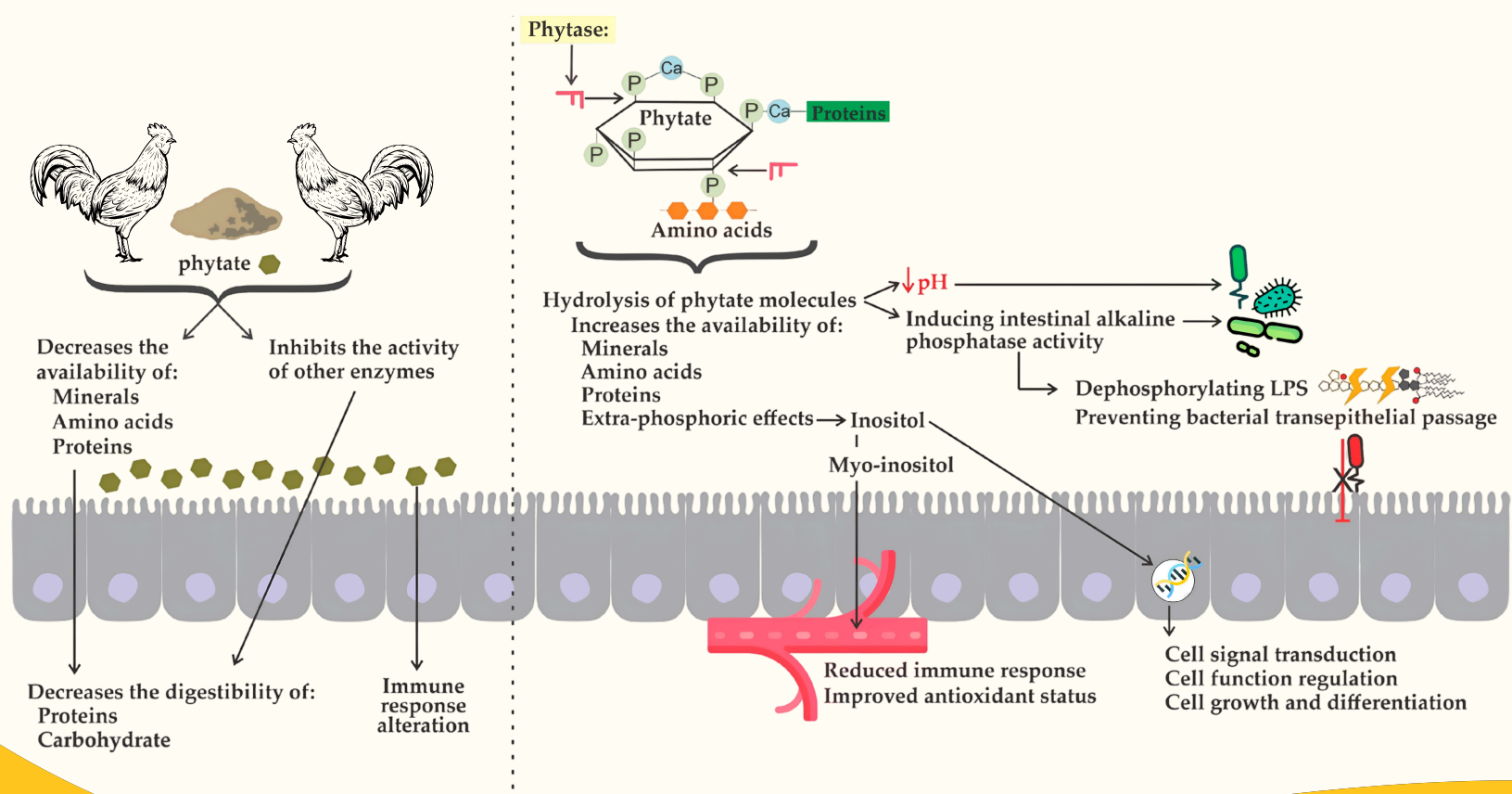
Composition

Each gram contains phytase enzyme with a minimum activity of **5000 FTU/g**.



Mode of Action

- Phyto Max-P is a 3-phytase enzyme that specifically acts on phytic acid (inositol hexakisphosphate, IP_6) present in plant-based poultry feeds.
- It hydrolyzes the phosphate group at the 3rd carbon position of the inositol ring, initiating the stepwise breakdown of phytate.
- This enzymatic action converts phytate into lower inositol phosphates while releasing bioavailable inorganic phosphorus (Pi) for poultry.
- Improves phosphorus and calcium utilization, along with enhanced absorption of essential trace minerals.
- Reduces the anti-nutritional effects of phytate by minimizing mineral and protein chelation.
- Supports better gut health, nutrient digestibility, and feed efficiency, leading to improved growth performance.
- Decreases phosphorus excretion into the environment, promoting sustainable and environmentally responsible poultry nutrition.





Benefits

- **Superior Stability:** Fungal 3-phytase in Phyto Max-P remains highly active across a broad pH range (2.5–5.5), ensuring efficient phosphorus release throughout the digestive tract.
- **Enhanced Phytate Degradation:** Effectively breaks down phytate-bound phosphorus, improving the bioavailability of key nutrients such as calcium, zinc, and amino acids.
- **Improved Heat Stability:** Exhibits greater resistance to high processing temperatures, maintaining enzyme activity during feed manufacturing.
- **Supports Gut Health:** Reduces residual undigested phytate, lowering intestinal irritation and minimizing anti-nutritional effects.
- **Environmentally Sustainable:** Maximizes phosphorus utilization, significantly decreasing phosphorus excretion and environmental pollution.
- **Cost-Effective Nutrition:** Improves Feed Conversion Ratio (FCR) and reduces dependence on inorganic phosphorus sources, helping lower overall feed costs.



Dosages

Phyto Max-P should be supplemented at **80–100 g per tonne of feed**.

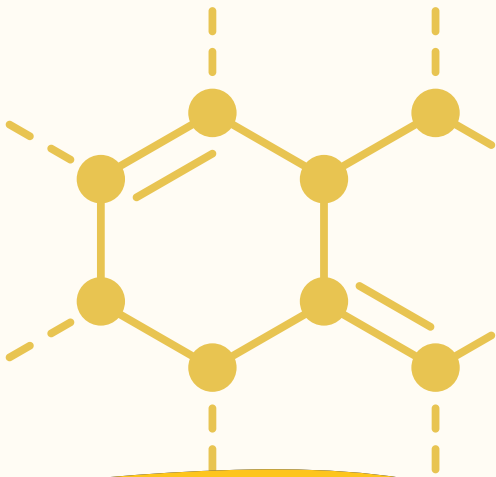
MATRIX VALUE	
FEATURE	DETAILS
Phosphorus Enhancement	Improves matrix value of phosphorus (P) by 0.1%
Practical Benefit	At 500 FTU/kg feed, Phyto Max- P increases available phosphorus by 0.1%, equivalent to approximately 6.3 kg of Dicalcium Phosphate (DCP) per ton of feed



Presentation

Form: Granular / Powder

Packaging: Available in 25 kg Bags





At Rigel Global Pvt. Ltd., we are committed to enhancing animal health, productivity, and overall well-being through advanced nutritional and healthcare solutions. Our Animal Health & Nutrition Division partners closely with farmers, veterinarians, and feed manufacturers across India and international markets, delivering scientifically validated products that support performance optimization, immune strength, and sustainable production in poultry, livestock, and aquaculture. Backed by a robust research-driven approach and global collaborations, we integrate internationally proven formulations with region-specific technologies to address the dynamic needs of the poultry, dairy, and aquaculture industries. Our diverse portfolio spans feed additives, probiotics, veterinary formulations, and biosecurity solutions —each developed with a strong focus on quality, efficacy, and safety.

Guided by our core principles of Integrity, Innovation, and Impact, Rigel Global Pvt. Ltd. strives to strengthen the food value chain while empowering partners with dependable products and expert technical support. We believe that healthy animals are the foundation of a healthy world, and every solution we deliver reflects this enduring commitment.



Plot No. 42 KH N. 14M Basant, Ext Colony,
Saharanpur City, Saharanpur- 247001,
Uttar Pradesh, India

Email Id: customersupport@rigelglob.com
Phone no.: +91 7037342055
Visit Us: rigelglob.com

P
-
X
-
A
M
O
T
Y
H
P